

ROTEX[®] 782E PLUS

COMPACT ELECTRIC E-TYPE HANDPIECE UNIT



- Ball bearing high torque electric motor.
- 1,000 to 35,000 R.P.M. variable speed.
- Double insulation heavy duty construction.
- Automatic cooling fan for continuous high speed performance.
- Forward/Reverse switch.
- Application for grinding, polishing, milling of precious metals, ceramics, acrylics and steel.
- Standard package includes Variable Speed Foot Control, Handpiece and Handpiece Rest.
- Circuit overload protection.
- Unit is available for 100/110V 50/60Hz or 220/240V 50Hz operation.

ROTEX[®] 782E PLUS

ROTEX® 782E PLUS

COMPACT ELECTRIC E-TYPE HANDPIECE UNIT

Straight Attachment

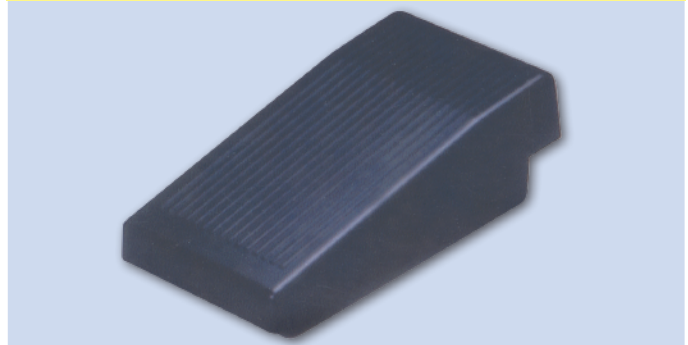


E-Type Motor Handpiece



Contra Attachment

Variable Speed Foot Control



SPECIFICATIONS :

- INPUT : 110V/220V 50/60Hz
- OUTPUT : 2-39V DC
- SPEED : 1,000-35,000 R.P.M.
- DIMENSIONS : L120xW190xH80mm
- WEIGHT : 2.0kg

DENTAMERICA®

18688 E. San Jose Ave.
City of Industry, CA 91748 U.S.A.
Phone: (626) 912-1388
Fax: (626) 913-0510
www.dentamerica.com
www.dentamerica.asia

DISTRIBUTOR

DENTAMERICA®